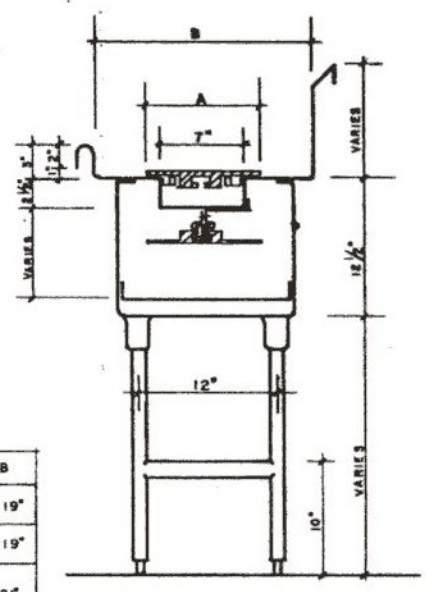
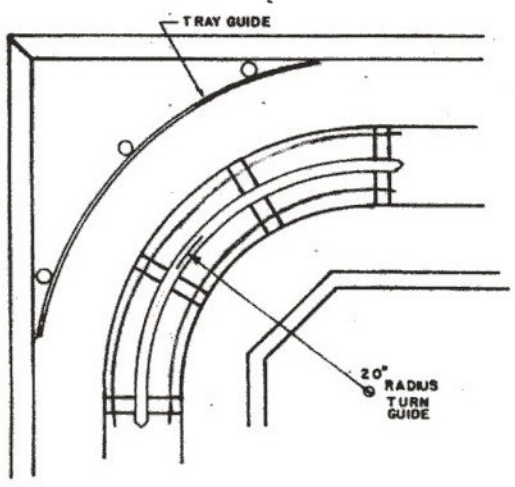
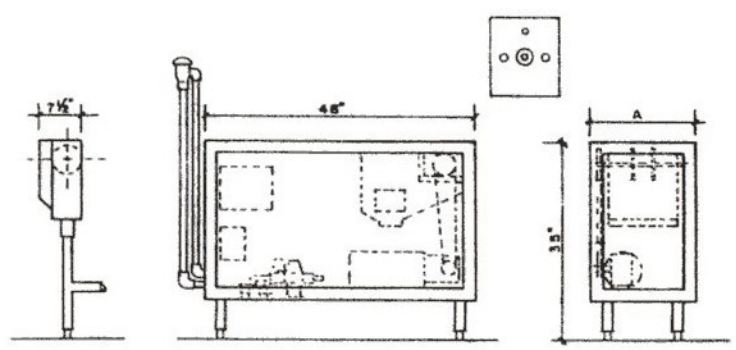


ENGINEERING DATA



TRAY SIZE	A	B
10" X 14"	7 1/2"	19"
12" X 16"	7 1/2"	19"
14" X 18"	10"	19"
15" X 20"	10"	19"
16" X 22"	12"	21"
17" X 23"	12"	21"
18" X 26"	12"	22"
20" X 20"	12"	22"

DRIVE SYSTEM ROUGH-IN

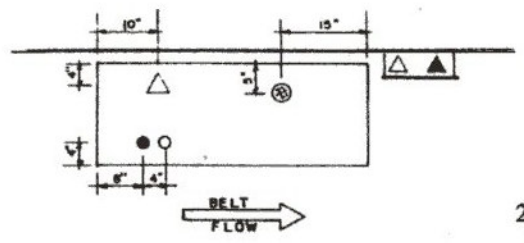


MOTOR DATA		
LENGTH	H.P.	VAR. SPEED VOLTS
0-40 FT.	1/2	120 OR 208 V. 1 Ø
40-80 FT.	1	120 OR 208 V. 1 Ø

NOTE: FOR LONGER UNITS OR UNITS WITH TURNS CONSULT FACTORY.

BELT SIZE	A	A DUAL BELTS
7 1/2" / 10"	18"	28 3/4"
12"	20"	32 1/4"

FOOD SERVICE CONVEYOR



LEGEND

- ▲ ELECTRICAL ROUGH-IN
- △ INTERCONNECTION FROM CONVEYOR PANEL TO DRIVE UNIT
- 1/2" HOT WATER CONNECTION
- 1/2" COLD WATER CONNECTION
- ⊙ 1 1/2" DRAIN CONNECTION

SHELCON INC.
 2081 S. HELLMAN AVE. #J
 ONTARIO, CA 91761
 (909)947-4877 FAX(909)947-1083

